

Modular Preparation 500 mm Hot Cupboard with Hinged Door

ITEM # _____

MODEL # _____

NAME # _____

SIS # _____

AIA # _____



121830 (TERPE5)

Hot Cupboard with 1 hinged
door, 500mm

Short Form Specification

Item No. _____

Constructed entirely in 304 AISI stainless steel. Front and rear longitudinal stainless steel c-channel reinforcement. Internal and external side panels with sound deadening reinforcements to strengthen structure. Door incorporates a sound deadening internal panel and is fitted with 304 AISI stainless steel hinges allowing an opening of 180° degrees. 150mm height-adjustable (0/+90mm) oversized feet (65x65mm) can be removed for masonry installation. 45° degree internal side corner junction system. 304 AISI middle shelf, with inner double fold to eliminate gaps between sides and back, height-adjustable in 3 positions with a stainless steel support to avoid twisting. Hot cupboard with channeled ventilation system (2-way output) to allow for a correct airflow and even temperature within the storage area. Fan-assisted heating via armoured elements assures temperature ranges from 30° to 90°C. Removable control panel with mechanical thermostat, green ON/OFF indicator light and orange indicator light for heating element operation.

Main Features

- Masonry installation possible by simply removing feet.
- Extremely easy to clean thanks to the smooth edges.
- Model specific to keep dishes warm.

Construction

- Front and rear lengthwise stainless steel c-channel reinforcement, 15/10 (16 gauges).
- Sound deadening reinforcements between internal and external side panels to strengthen structure.
- Mounted on 150 mm height adjustable (0/+90 mm) oversized (65x65 mm) feet.
- Internal sides supporting the structure to have 45° degrees internal side corners junction system.
- 30 mm high middle-shelf in AISI 304 stainless steel, height-adjustable in 3 positions, with inner double fold to eliminate gaps between sides and back.
- Made in 304 AISI CrNi 18/10 stainless steel with Scotch Brite finish.
- Hinged door with sound deadening internal panels, fitted with 304 AISI stainless steel hinges on the inner sides, allows a 180° degree opening.
- Supplied with a channeled ventilation system (2 way outputs) which allows a correct airflow and even temperature inside the storage area.
- Fan assisted heating via armored elements ensuring temperature range from 30° to 90°C.
- Detachable control panel with mechanical thermostat and on/off green and orange indicator light for heating element operation.

Optional Accessories

- Stainless steel plinth, 500mm PNC 855821 ☐
- Stainless steel plinth for end elements, 700mm depth PNC 855837 ☐

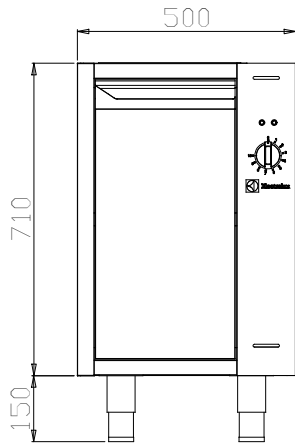
APPROVAL: _____



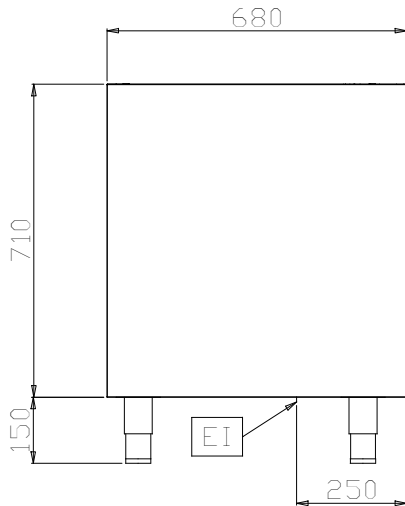
Electrolux
PROFESSIONAL

Modular Preparation 500 mm Hot Cupboard with Hinged Door

Front

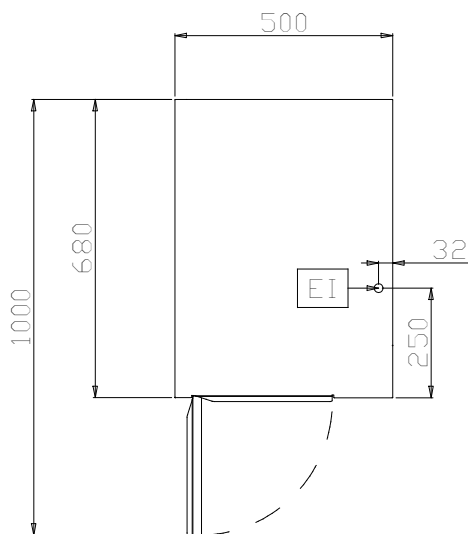


Side



EI = Electrical inlet (power)

Top



Electric

Supply voltage:	230 V/1 ph/50/60 Hz
Total Watts:	1.4 kW

Key Information:

Cabinet width:	330 mm
Cabinet depth:	645 mm
Cabinet height:	620 mm
N° of doors:	1
Door Type:	Hinged
External dimensions, Width:	500 mm
External dimensions, Depth:	680 mm
External dimensions, Height:	860 mm
Net weight:	9 kg



Modular Preparation
500 mm Hot Cupboard with Hinged Door

The company reserves the right to make modifications to the products without prior notice. All information correct at time of printing.

2025.06.30